



Shedplans.com would like to say
Thanks again for choosing our shed plan!!
1000's of sheds have been built from these plans.

Plan #283

(10' x 16')

**You put a lot of work into your new shed.
Let us show the world your project.
We would like to display your building on
our website.**

**Then at a click of a button you can show your friends and anyone else you
would like how well your project turned out.**

**You can go to www.shedplans.com or email us for the mailing address for a
place to send the
pictures. You can also send us the pictures in email if you want. If you send
your pictures by email**

**Please try to keep the size limited and make sure the subject contains the
words SHED PICTURES. We**

do not open any attachments that we are not expecting.

We would like new photographs of our buildings.

- 1. The building must be built from our plans.**
- 2. Photographs must be in color (no Polaroid's, please).**
- 3. We would prefer photographs of the construction phase also. (Not required)**
- 4. Building must be finished and painted.**

If you have not downloaded the step-by-step guide, I suggest you do so,
go to this link <http://www.shedplans.com/PguideSP.html>

DISCLAIMER

Do not purchase materials or attempt to build this project unless you have studied the plans thoroughly, have verified all dimensions and material requirements for yourself. And have verified that they conform to local building codes and practices. Although every effort has been made to ensure the accuracy of the information and design, the user is ultimately responsible for the use of these plans. These plans are copyrighted and cannot be duplicated without the permission of Choice Buildings.

INSTRUCTIONS:

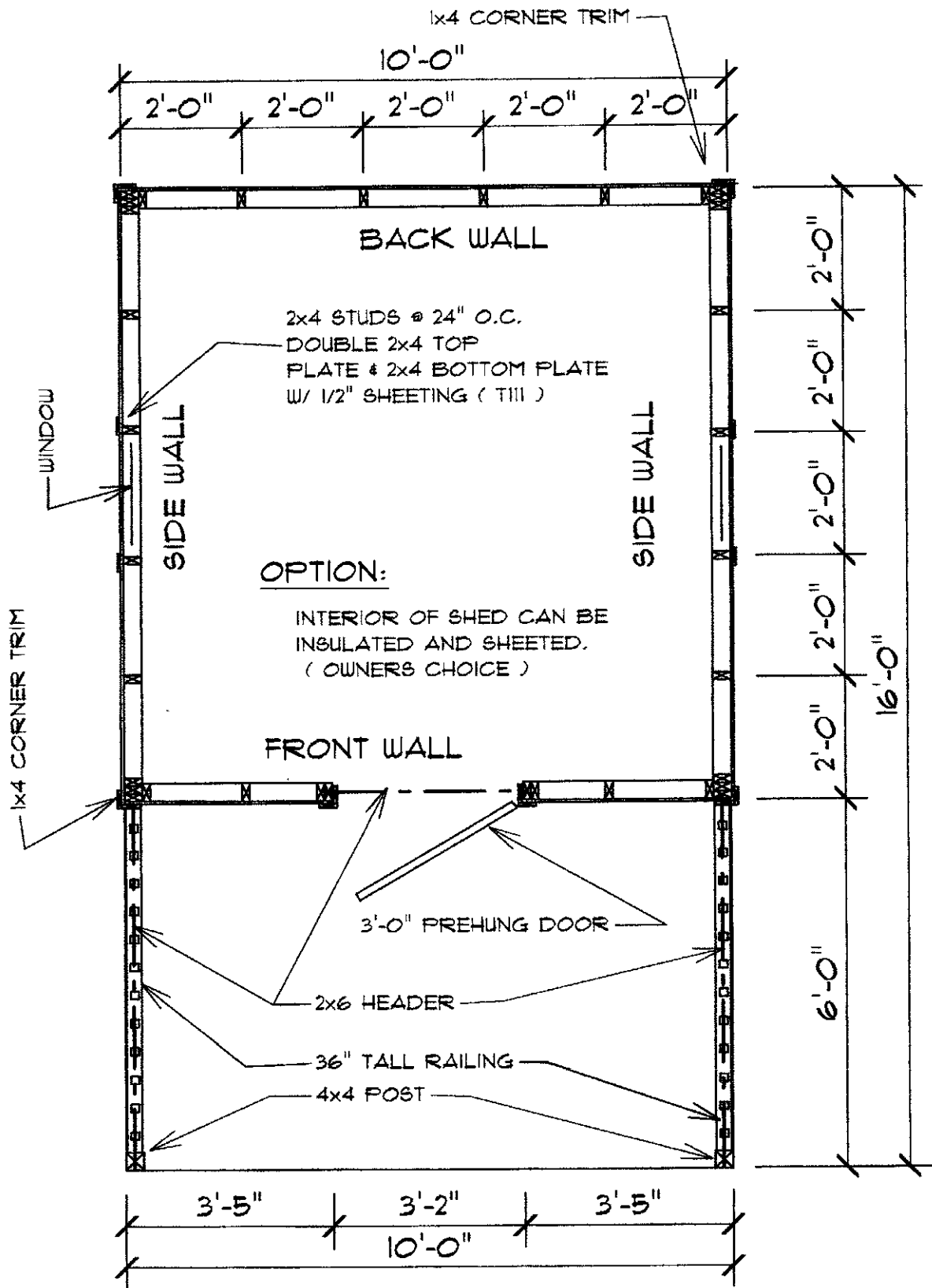
Before starting your project, we suggest that you check with your utility companies to locate any underground utility or septic lines that may be in the way. If you find you have underground lines in the way, you may wish to relocate the building. In any case be sure the locations of any underground lines are properly marked before digging. Some utility companies will provide this service at no cost.

- 1) Study the plans thoroughly. Be sure to check your local code requirements and if required, obtain a building permit.
- 2) Prepare the grade and place the conc. blocks level as located on the floor layout.
(A concrete or block foundation is an option - see details, if so, skip steps 3 & 4)
- 3) Lay out the 2x6 floor joist at 16" o.c. Place the inside rim joist and nail to the floor joist with #16 nails. Then wrap the outside with the second rim joist and nailing in place.
- 4) Install the 3/4" flooring, running across the joist and nailing with #8d nails at 8" o.c.
Run the 1/2" top plate out over the deck area. (remember to frame the window opening according to the windows being used) When finished, stand up the wall, using a level to get it plumb and brace with spars 2x4. Repeat the other wall.
- 6) Frame the back wall, raise and nail in place. Repeat the front wall.
- 7) Frame the porch, set the 4x4 post and place the double 2x6 header into the pocket in the front wall and set on the 4x4, nail in place. Then nail the lower (16") top plate to the header.
- 8) Place and nail the second top plates in place, overlapping at corners. Check all walls with a level to insure plumb.
- 9) Now install the siding by nailing with 8d galvanized nails at 8" o.c.
- 10) Build rafters, set and nail in place. Install 2x4 outlooks, 2x4 sub fascia and 1x6 fascia board.
- 11) Install roof sheathing with 8d nails, staggering sheets so splices don't line up. Leave 1/8" between sheets in humid climates.
- 12) Now is a good time install the felt paper, then the metal drip edge and now its ready for shingles.
- 13) Sheat the gable ends with siding, then install the 2x2 rafters for the 1/4" soffits. Install the ceiling in the porch area with 4d galvanized nails.
- 14) Build railings, fasten the top & bottom rails to the 2x2 spindles with 4" spars in between. Then place them in between the 4x4 and the building and fasten in to place.
- 15) Install your door and window and trim with 1x4's, (shutters on an option) also trim the 4 corners of the building with 1x4's.
- 16) Paint your building and your project is now complete.

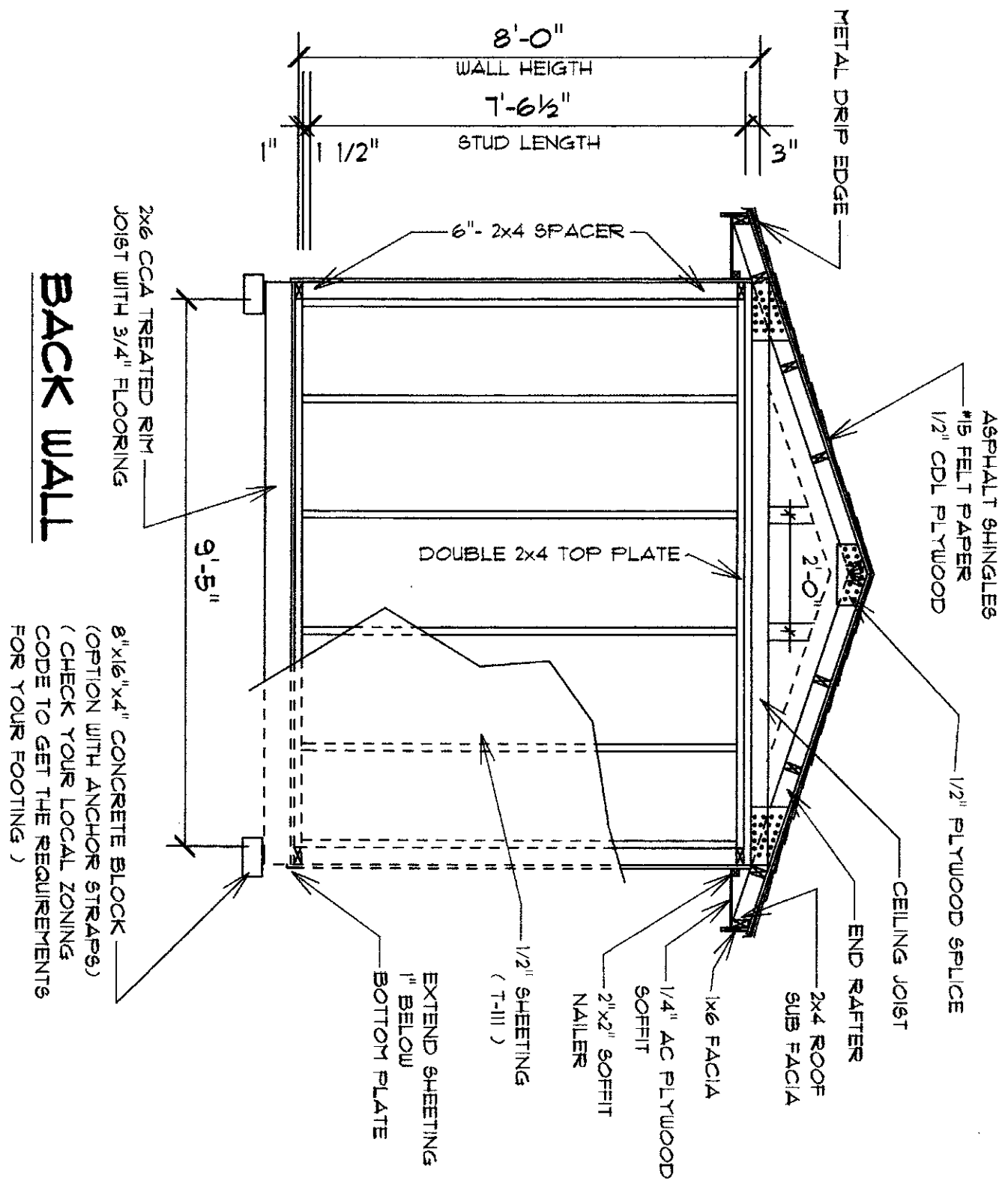
Plan #283 Materials List 10'x16'

If you change the size of the building, then make adjustments to this materials list

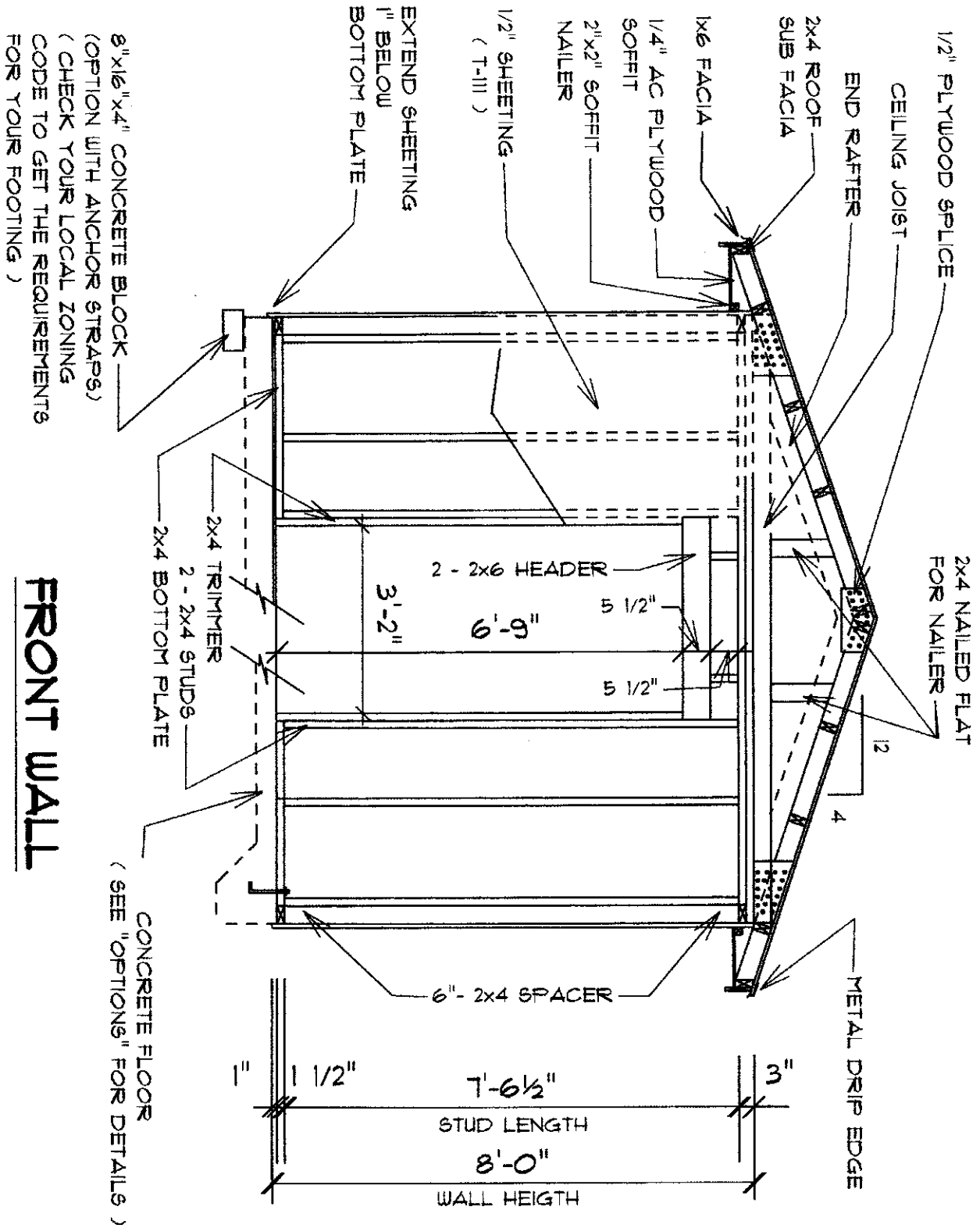
Section	Quantity	Size	Description	Cost
FLOOR	10	8x16x4	Concrete Blocks	
	4	2x6x16'	CCA Rim Joist	
	15	2x6x10'	CCA Floor Joist	
	5	4x8x3/4"	CDX T&G Plywood	
WALLS	10	2x4x10'	Bottom/Top Wall Plates	
	2	2x4x16'	Top Plates	
	32	2x4x8'	Studs	
	2	2x6x8'	Headers	
	2	2x4x8'	Deck Posts	
	2	2x4x12'	Deck Headers	
	10	4'x8'x1/2"	T 1-11 or other siding	
	1	36"	Pre Hung Door	
	2	14"x30"	Windows	
	15	1"x4"x8"	Corner Trim	
ROOF	18	2x4x8'	Rafters	
	10	2x4x10'	Ceiling Joists	
	1	4'x8'x1/2"	Plywood, (splices)	
	4	2x4x12'	Look Outs	
	4	2x4x10'	Sub Fascia	
	4	2x4x8'	Sub Fascia	
	12	4'x8'x1/2"	Plywood	
	4	1"x6"x10'	Fascia	
	4	1"x6"x8'	Fascia	
	8	10'	Medal Drip Edge	
	2	Rolls	15lbs Roofing Felt	
	8	Bundles	3 Tab Shingles	
	9	2"x2"x8	Soffit Nailers	
	5	4'x8'x1/4"	Plywood Soffit	
RAILINGS	2	2x4x12'	For Railing Top/Bottom	
	9	2"x2"x8'	Spindles	



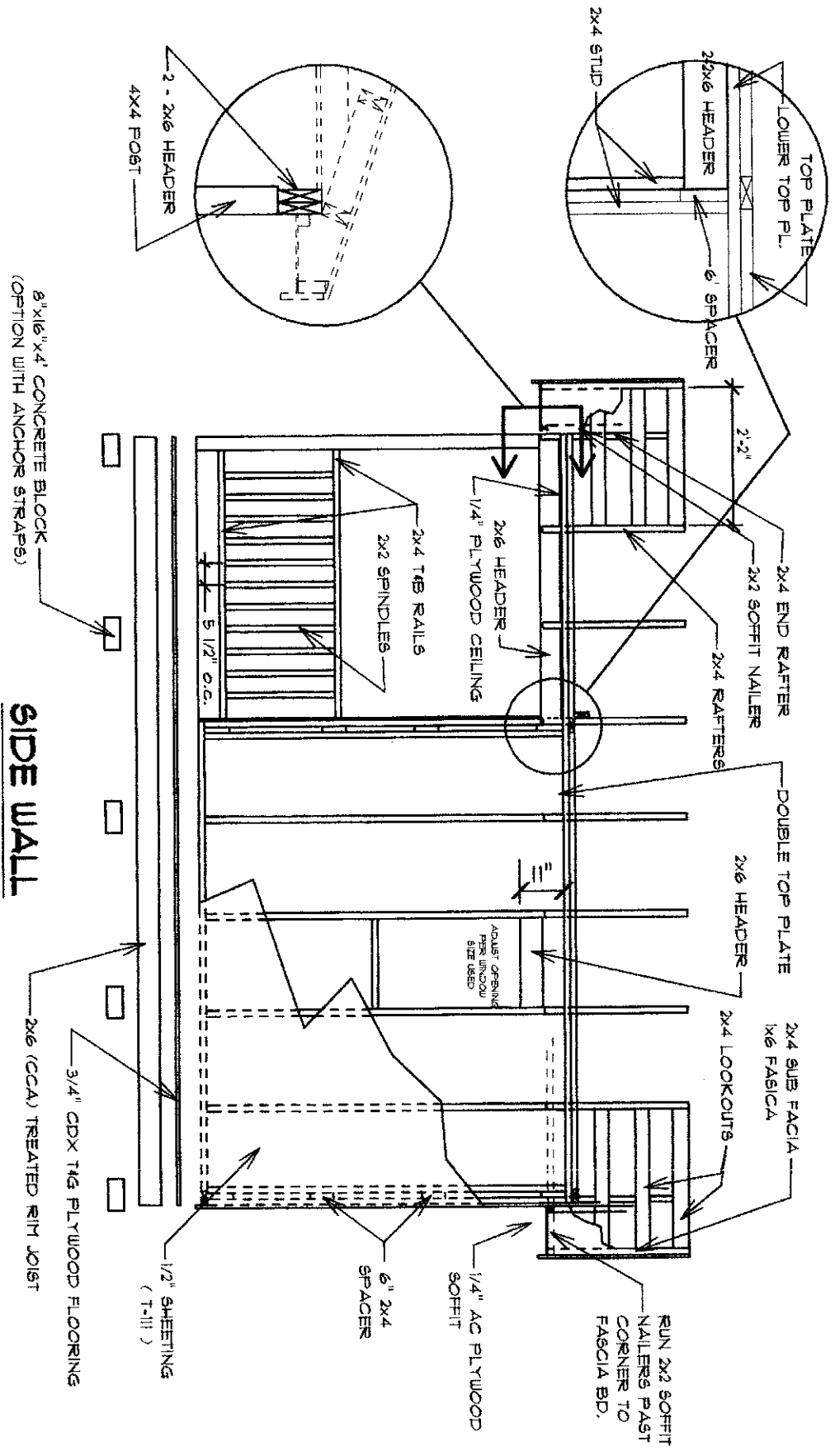
WALL LAYOUT



BACK WALL



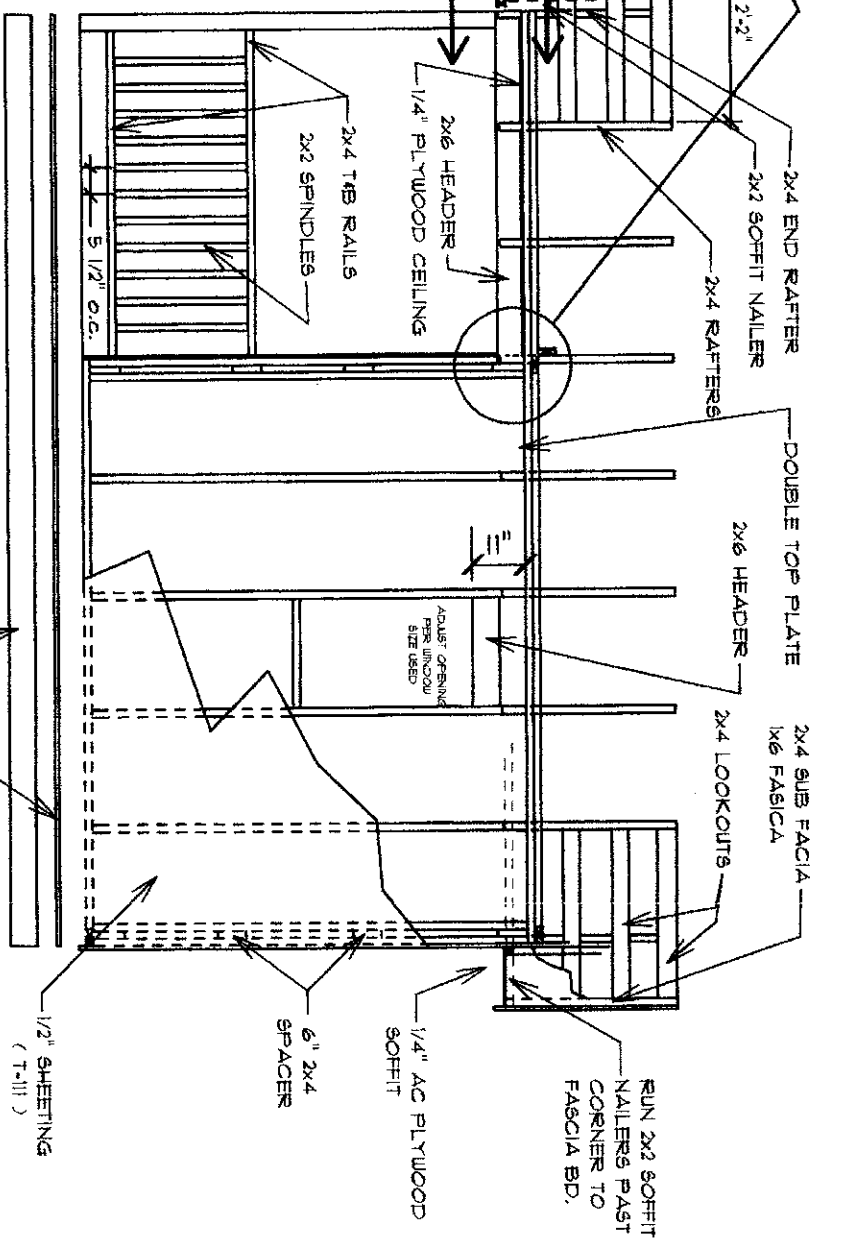
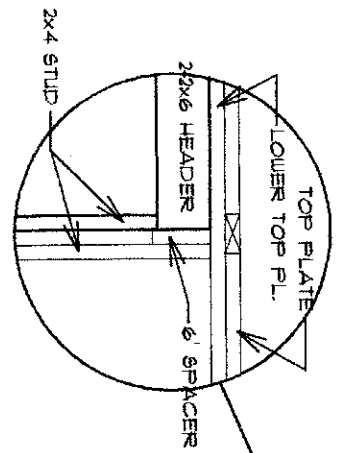
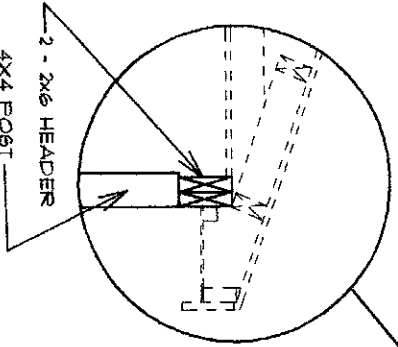
FRONT WALL

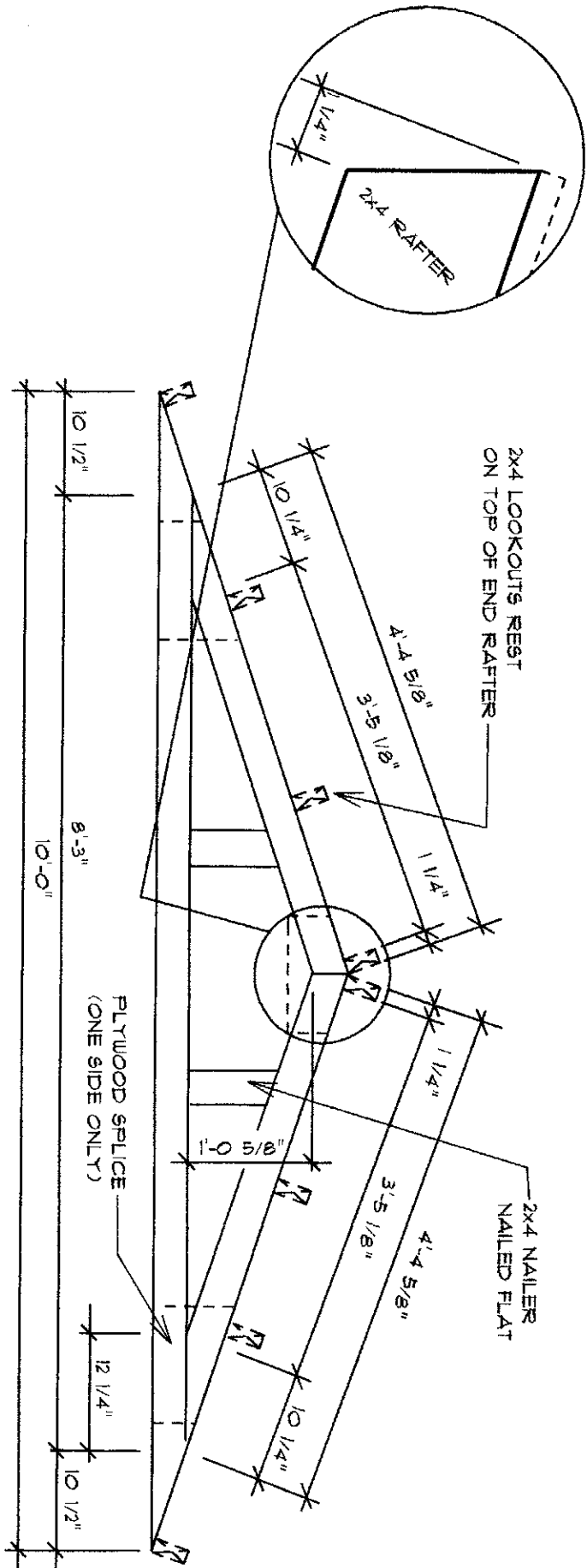


8"x6"x4" CONCRETE BLOCK
(OPTION WITH ANCHOR STRAPS)

SIDE WALL

3/4" CDX T&G PLYWOOD FLOORING
2x6 (CCA) TREATED RIM JOIST





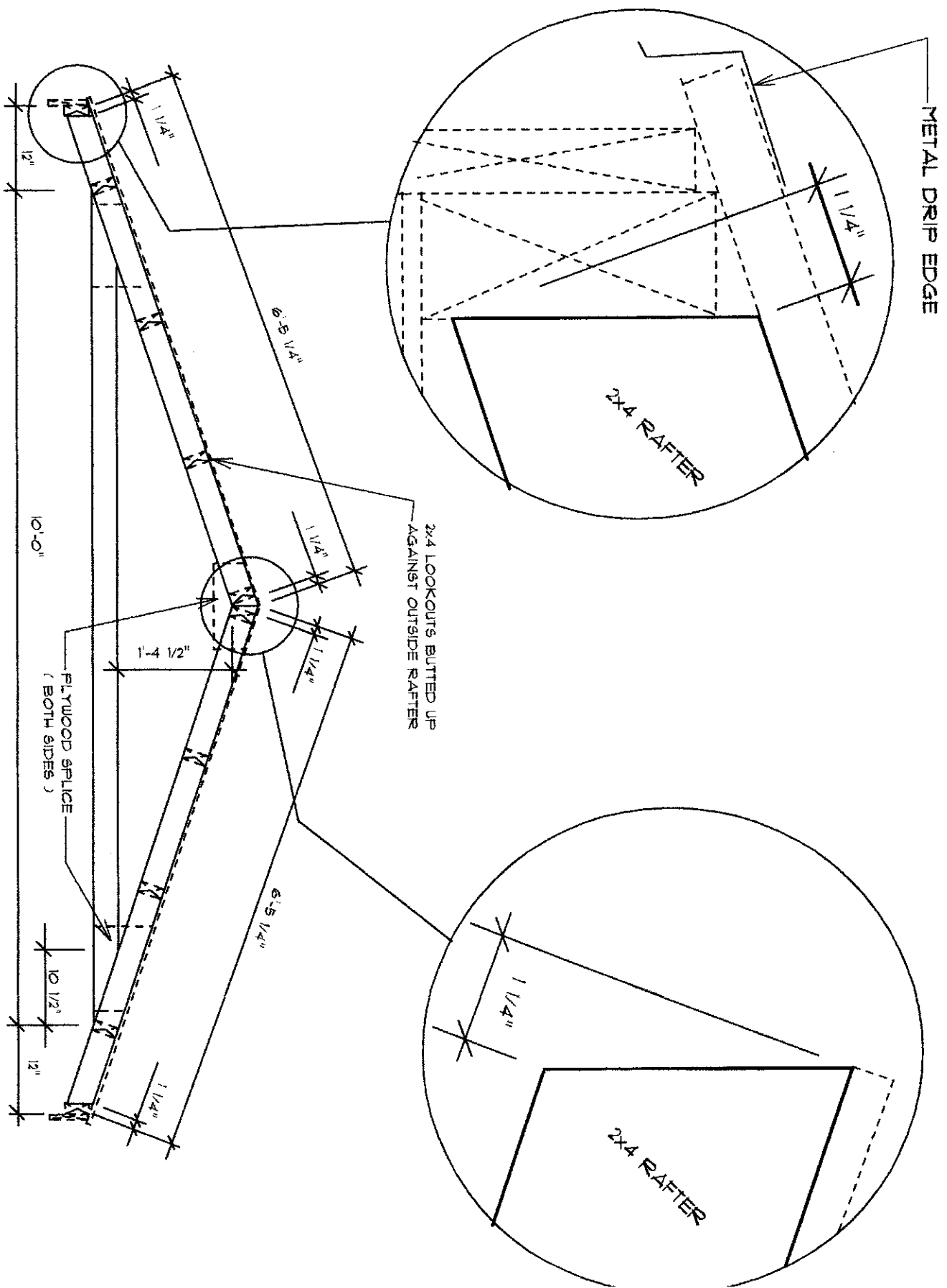
END RAFTER

QUANTITY - 2

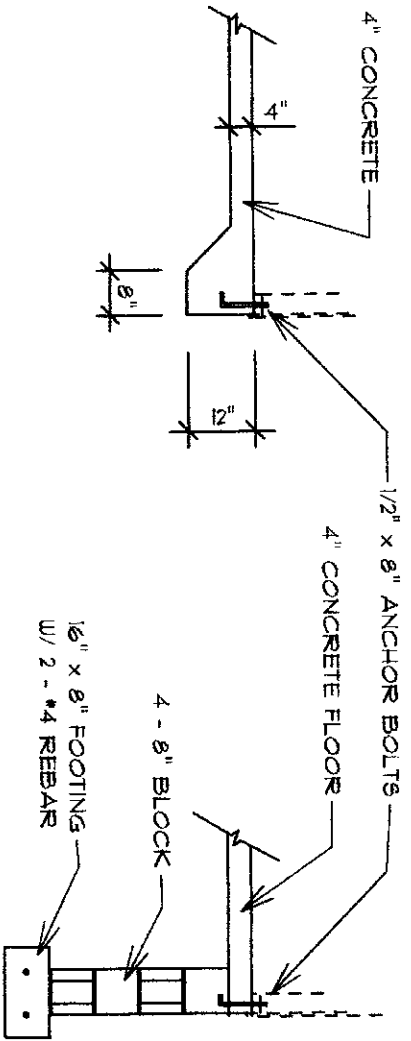
SCALE: 1" = 1'-0"

OPTIONS:

CHECK WITH YOUR LUMBERYARD AND SEE IF THEY CAN SUPPLY YOU WITH PRE-BUILT ROOF TRUSSES. IT WILL SAVE YOU SOME TIME AND MAY SAVE YOU SOME MONEY TOO.



-- OPTIONS --



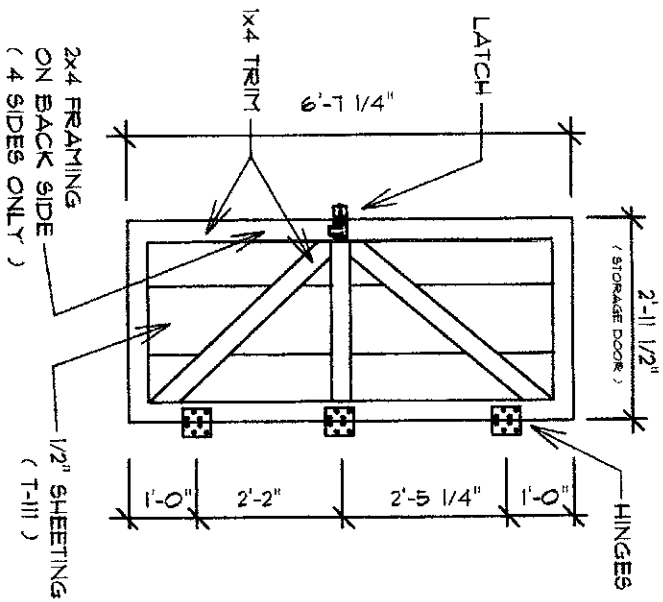
**CONCRETE
FOUNDATION**

OR

**BLOCK
FOUNDATION**

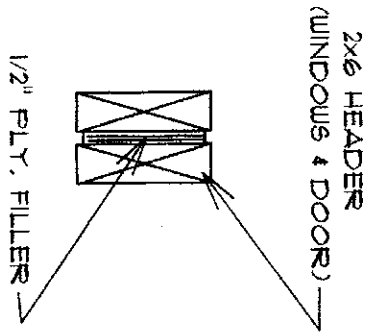
(OPTION #1)

(OPTION #2)

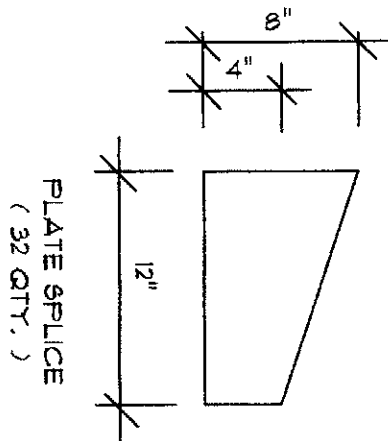
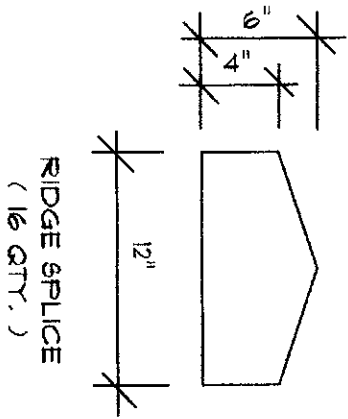


DOOR PLAN

(DOOR OPTION)

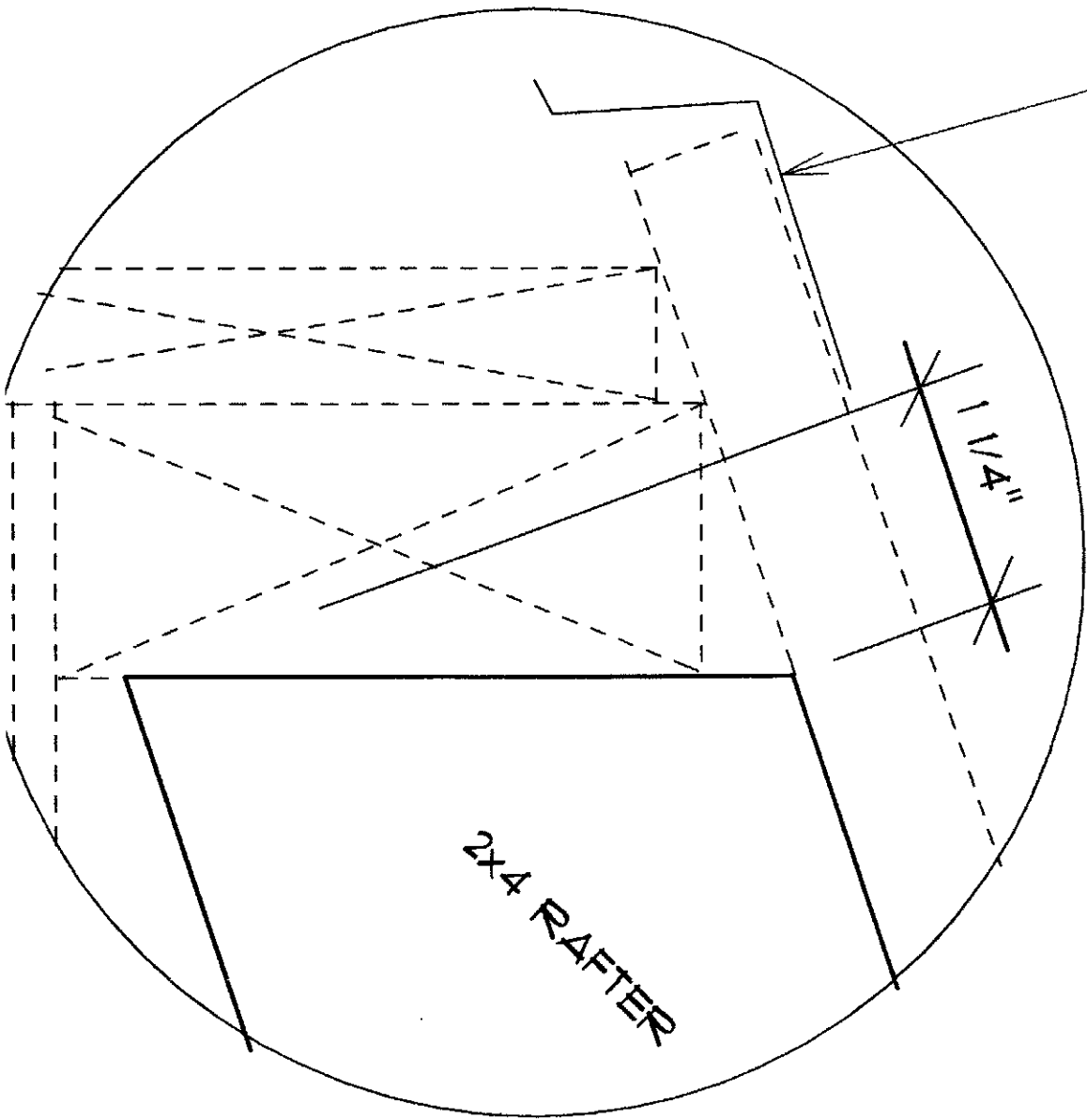


(TYPICAL)
HEADER DETAIL



1/2" PLYWOOD SPLICE
(OR USE METAL MENDING PLATES)

METAL DRIP EDGE

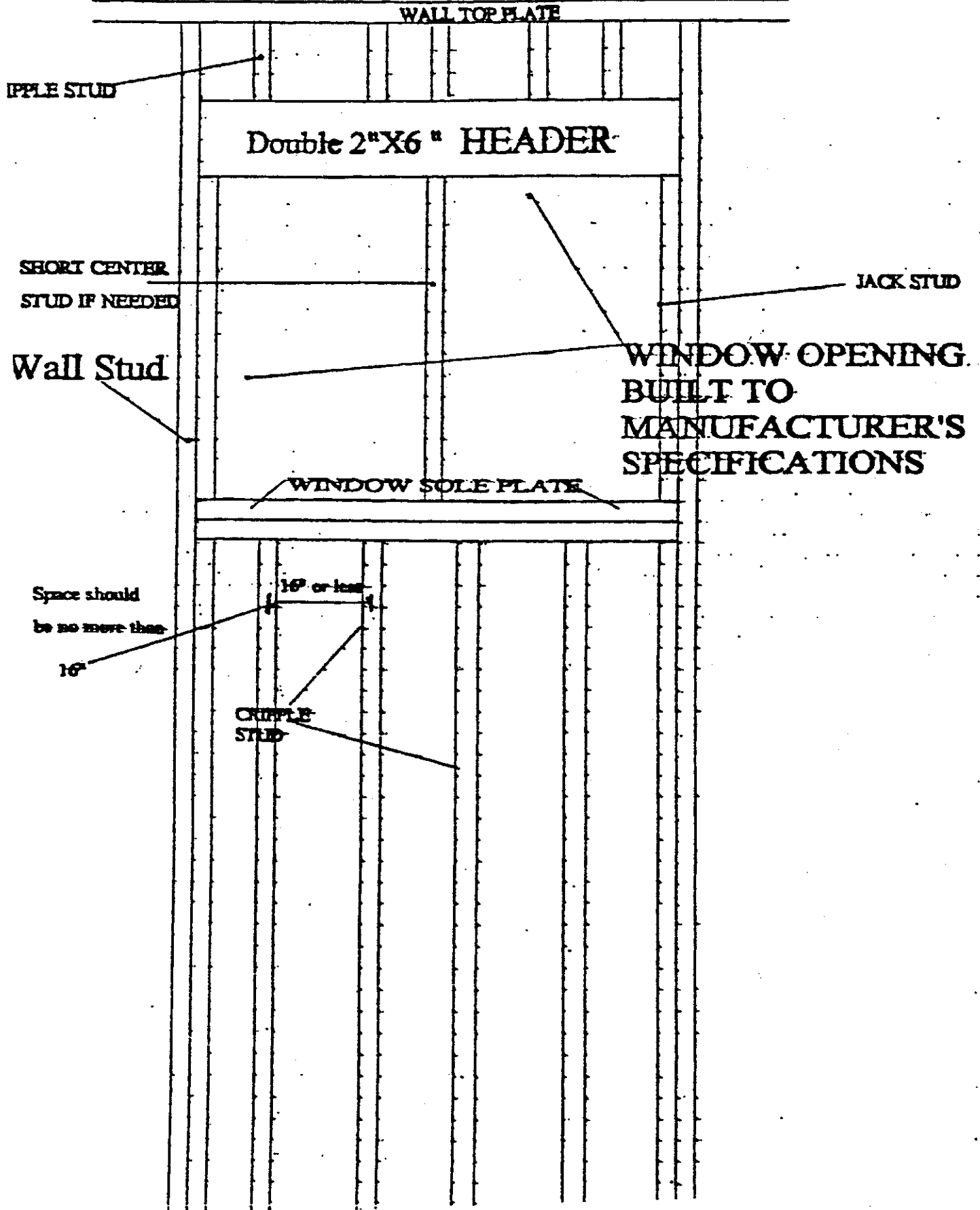


2x4 RAFTER

$1\frac{1}{4}$ "

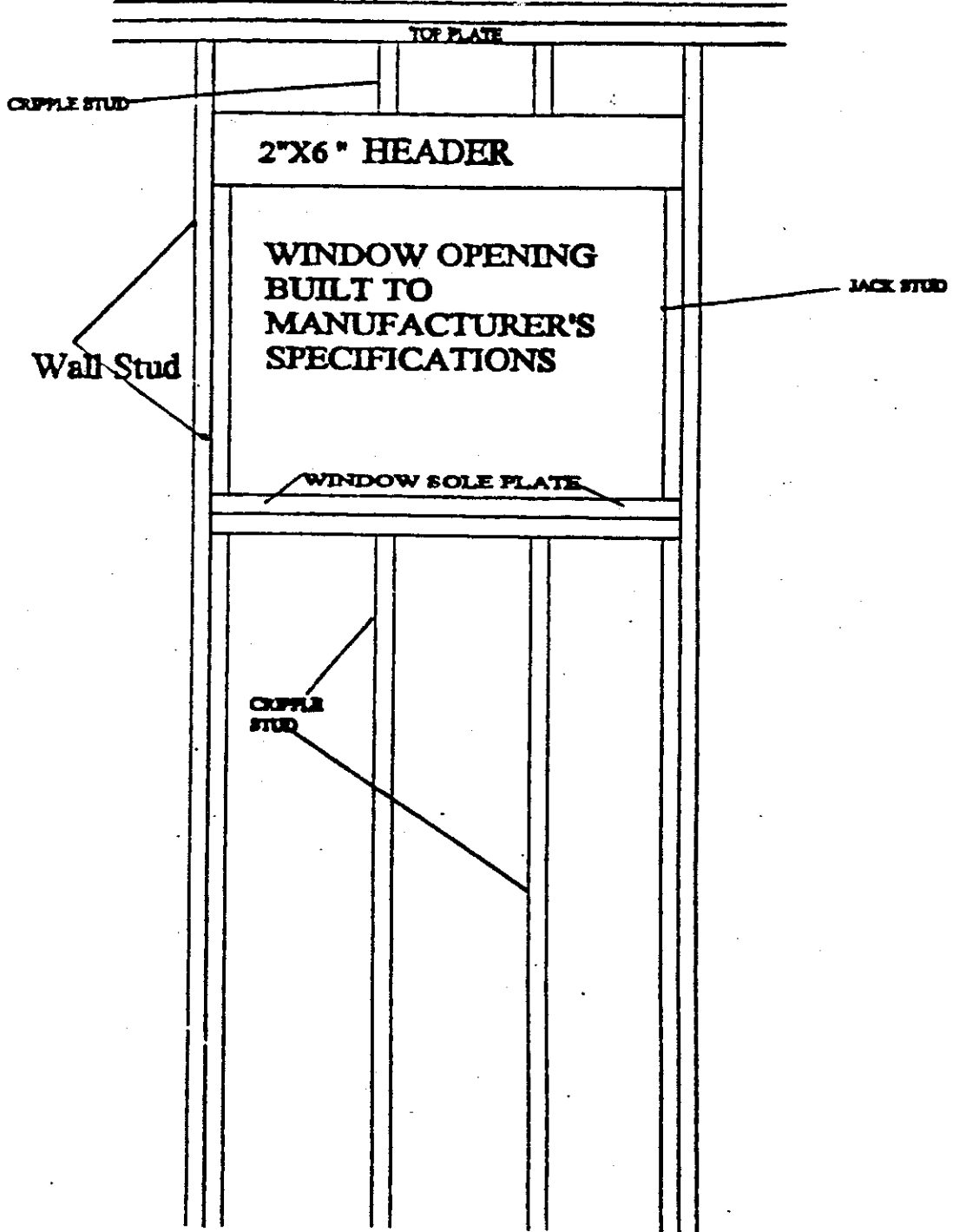
DOUBLE WINDOW LAYOUT

ADJUST WINDOW WHERE YOU WANT IT ON YOU WALL
BY CHANGING THE LENGTH OF YOUR CRIPPLE STUDS



SINGLE WINDOW LAYOUT

ADJUST WINDOW WHERE YOU WANT IT ON YOU WALL
BY CHANGING THE LENGTH OF YOUR CRIPPLE STUDS



DOOR PLAN
USE THIS PLAN TO ADD A DOOR
OR BUILD A DOOR THE PLANS CALL FOR

